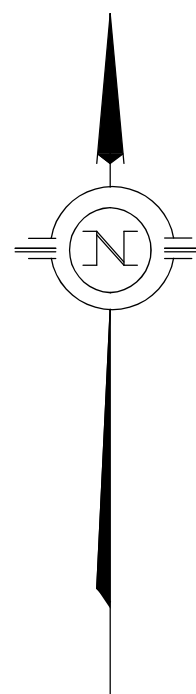


METRIC: DISTANCES AND COORDINATES SHOWN HEREON ARE IN METRES
CAN BE CONVERTED TO FEET BY DIVIDING BY 0.3048



SCHEDULE				
PART	LOT	PLAN	PIN	AREA
1	PART OF LOT 3	15	PART OF PIN 28370-0122(LT)	945.4 Sq.m.

PLAN 45R-17762

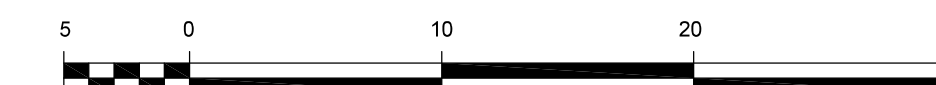
Received and deposited

November 25th, 2024

Krystal Power

Representative for the
Land Registrar for the
Land Titles Division of
Peterborough (No.45)

PLAN OF SURVEY OF
PART OF LOT 3
REGISTERED PLAN No. 15
GEOGRAPHIC TOWNSHIP OF HARVEY
MUNICIPALITY OF TRENT LAKES
COUNTY OF PETERBOROUGH



SCALE: 1:300

THE INTENDED PLOT SIZE OF THIS PLAN IS 860mm IN WIDTH BY 560mm IN HEIGHT
WHEN PLOTTED AT A SCALE OF 1:300

SURVEYOR'S CERTIFICATE

I CERTIFY THAT:

- 1) THIS SURVEY AND PLAN ARE CORRECT AND ARE IN ACCORDANCE WITH THE SURVEYS ACT, THE SURVEYORS ACT AND THE LAND TITLES ACT AND THE REGULATIONS MADE UNDER THEM.
- 2) THE SURVEY WAS COMPLETED ON 1st MAY, 2024

SIGNED AT LAKEFIELD, ONTARIO
THIS 5th DAY OF SEPTEMBER, 2024

Christophe E. Musclove
CHRISTOPHE E. MUSCLOW
ONTARIO LAND SURVEYOR

THIS PLAN OF SURVEY IS RELATED TO AOLS PLAN
SUBMISSION FORM NUMBER V-82297.

LEGEND

- DENOTES SURVEY MONUMENT FOUND
- DENOTES SURVEY MONUMENT PLANTED
- WT. DENOTES WITNESSES
- 519 DENOTES A. MATHESON, O.L.S.
- 1647 DENOTES J.B. FLEGUEL, O.L.S.
- P1 DENOTES PLAN REGISTERED PLAN No. 15
- P2 DENOTES PLAN OF SURVEY BY J.B. FLEGUEL, O.L.S. DATED 21 FEBRUARY 2001

BEARINGS SHOWN HEREON ARE UTM GRID, DERIVED FROM REAL TIME NETWORK (RTN) OBSERVATIONS ON POINTS A AND B LISTED HEREON AND ARE REFERRED TO THE CENTRAL MERIDIAN OF UTM ZONE 17 (81° WEST LONGITUDE) NAD 83 (CSRS EPOCH 2010.0).

FOR BEARING COMPARISONS, A ROTATION OF 1°59'00" COUNTER CLOCKWISE WAS APPLIED TO BEARINGS SHOWN ON PLAN P1 AND P2.

DISTANCES SHOWN HEREON ARE GROUND DISTANCES AND CAN BE USED TO COMPUTE GRID DISTANCES BY MULTIPLYING BY A COMBINED SCALE FACTOR OF 1.00010417

INTEGRATION DATA

COORDINATES ARE DERIVED FROM GPS RTK OBSERVATIONS USING THE SMARTNET CORRECTION DATA AND ARE REFERRED TO UTM ZONE 17 (81°W LONGITUDE) NAD83 (CSRS EPOCH 2010.0).

OBSERVED REFERENCE POINT (ORP) COORDINATE VALUES ARE TO REMOTE ACCURACY SPECIFICATION IN ACCORDANCE WITH SEC. 14(2) OF O.REG. 216/10

POINT	UTM NORTHING	UTM EASTING
ORP (A)	4951185.67	711591.36
ORP (B)	4951232.77	711510.63

CAUTION: COORDINATES CANNOT, IN THEMSELVES, BE USED TO RE-ESTABLISH CORNERS OR BOUNDARIES SHOWN ON THIS PLAN.

NOTE:

THE LIMIT OF MISSISSAGUA RIVER AS SHOWN HEREON IS THE BEST AVAILABLE EVIDENCE OF THE ORIGINAL HIGH WATER MARK OR WATER'S EDGE EXISTING AT THE TIME OF THE ORIGINAL SURVEY OF THE TOWNSHIP OF HARVEY



JBF SURVEYORS
3177 LAKEFIELD ROAD, BOX 70
LAKEFIELD, ON K0L 2H0
PHONE: 705-652-6198
INFO@JBF SURVEYORS.COM
WWW.JBF SURVEYORS.COM
PROJ. # 9350

