

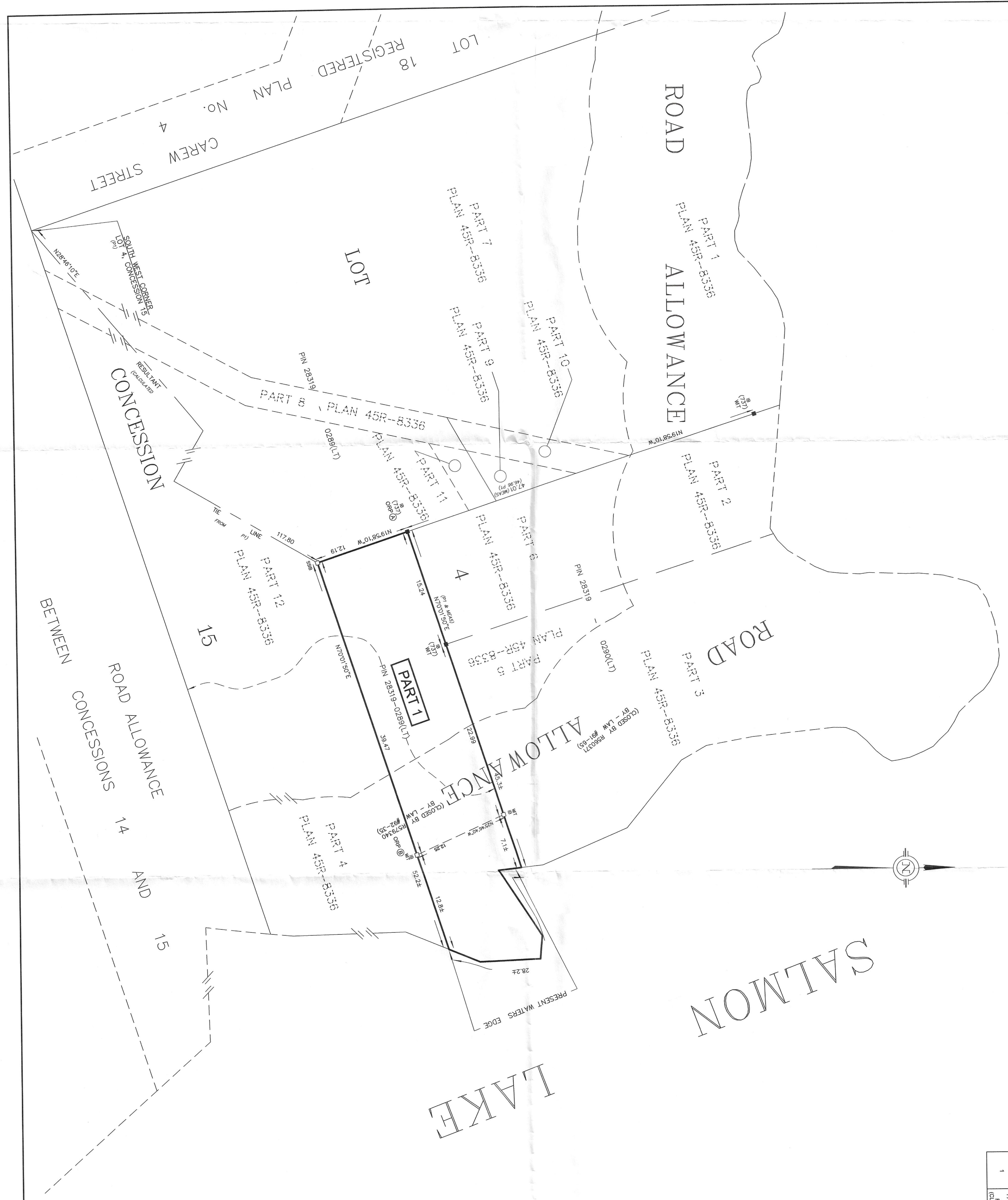
METRIC - DISTANCES AND COORDINATES SHOWN HEREON ARE IN METERS  
CAN BE CONVERTED TO FEET BY DIVIDING BY 0.3048

PART	LOT	CONCESSION	PIN	AREA
1	PART OF LOT 4 PART OF THE ROAD FRONT OF LOT 4 (CLOSED BY R579340)	15	28319-02881(LT)	661.2 Sq.m.

SCHEDULE

**PLAN 45R-17558**  
 Received and deposited  
 October 27<sup>th</sup>, 2023  
 Allison Turner  
 Representative for the  
 Land Registrar for the  
 Land Titles Division of  
 Peterborough (No.45)

SALMON LAKE



**PLAN OF SURVEY OF**  
 PART OF LOT 4, CONCESSION 15  
 PART OF THE ROAD ALLOWANCE  
 IN FRONT OF LOT 4,  
 CONCESSION 15 (CLOSED BY R579340)  
 GEOGRAPHIC TOWNSHIP OF CAWENDISH  
 MUNICIPALITY OF TRENT LAKES  
 COUNTY OF PETERBOROUGH

SCALE: 1:250  
 THE INTENDED PLOT SIZE OF THIS PLAN IS 900mm IN WIDTH BY 600mm IN HEIGHT  
 WHEN PLOTTED AT A SCALE OF 1:250

**SURVEYOR'S CERTIFICATE**  
 I CERTIFY THAT:  
 1) THIS SURVEY AND PLAN ARE CORRECT AND ARE IN ACCORDANCE WITH THE SURVEY ACT AND THE REGULATIONS MADE UNDER THEM.  
 2) THE SURVEY WAS COMPLETED ON 30 JUNE, 2023

SIGNED AT LAKEFIELD, ONTARIO  
 THIS 30th DAY OF JUNE, 2023  
 CHRISTOPHER E. MUSICK  
 ONTARIO LAND SURVEYOR

THIS PLAN OF SURVEY IS RELATED TO AOLS PLAN SUBMISSION FORM NUMBER V-28098  
**LEGEND**  
 ■ DENOTES SURVEY MONUMENT FOUND  
 □ DENOTES SURVEY MONUMENT PLANNED  
 W DENOTES WITNESS  
 737 DENOTES R.B. STINSON O.L.S.  
 P1 DENOTES PLAN 45R-48338

BEARINGS SHOWN HEREON ARE UTM GRID, DERIVED FROM REAL TIME NETWORK (RTN) OBSERVATIONS ON POINTS A AND B LISTED HEREON AND ARE REFERRED TO THE CENTRAL MERIDIAN OF UTM ZONE 17 (81° WEST LONGITUDE) NAD 83 (CSRS EPOCH 2010.0).  
 FOR BEARING COMPARISONS, A ROTATION OF 15159° COUNTER CLOCKWISE WAS APPLIED TO BEARINGS SHOWN ON PLAN 45R-48338  
 DISTANCES SHOWN HEREON ARE GROUND DISTANCES AND CAN BE USED TO COMPUTE GRID DISTANCES BY MULTIPLYING BY A COMBINED SCALE FACTOR OF 1.0000533

**NOTE**  
 THE LIMIT OF SALMON LAKE AS SHOWN HEREON IS THE BEST AVAILABLE EVIDENCE OF THE ORIGINAL HIGH WATER MARK OR WATER'S EDGE EXISTING AT THE TIME OF THE ORIGINAL SURVEY OF THE TOWNSHIP OF CAWENDISH

**INTEGRATION DATA**

COORDINATES ARE DERIVED FROM GPS RTK OBSERVATIONS USING THE 887M LONGUENEAUX (CORS BPOCH 2010.0) AND 173M LONGUENEAUX (CORS BPOCH 2010.0) OBSERVED REFERENCE POINT (ORP) COORDINATE VALUES ARE TO REMOVE ACCURACY SPECIFICATION IN ACCORDANCE WITH SEC. 14(2) OF O REG. 218/10

POINT	UTM NORTHING	UTM EASTING
ORP (A)	4964428.85	702487.24
ORP (B)	4964428.87	702488.50

CAUTION: COORDINATES CANNOT IN THEMSELVES BE USED TO RE-ESTABLISH CORNERS OR BOUNDARIES SHOWN ON THIS PLAN

**JBF SURVEYORS**  
 3177 LAKEFIELD ROAD, BOX 70  
 LAKEFIELD, ON, K0L 2H0  
 PHONE: 705-652-6198  
 INFO@JBSURVEYORS.COM  
 WWW.JBSURVEYORS.COM  
 PROJ # 8468 RP