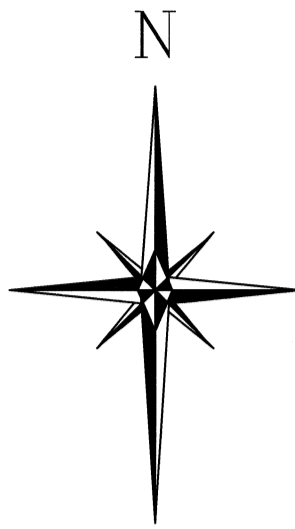
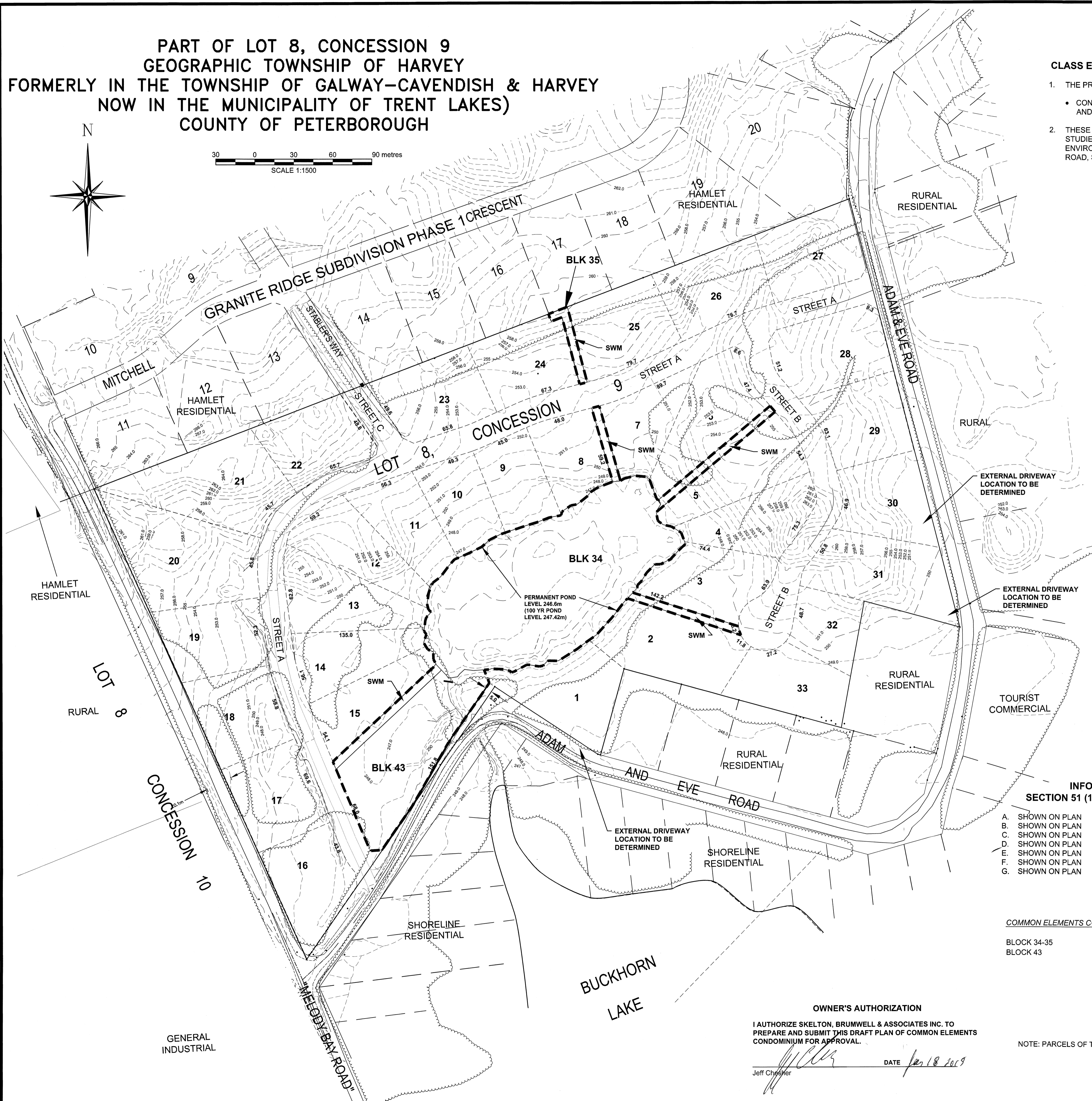


2361-DP CEC

PART OF LOT 8, CONCESSION 9
GEOGRAPHIC TOWNSHIP OF HARVEY
FORMERLY IN THE TOWNSHIP OF GALWAY-CAVENDISH & HARVEY
NOW IN THE MUNICIPALITY OF TRENT LAKES)
COUNTY OF PETERBOROUGH

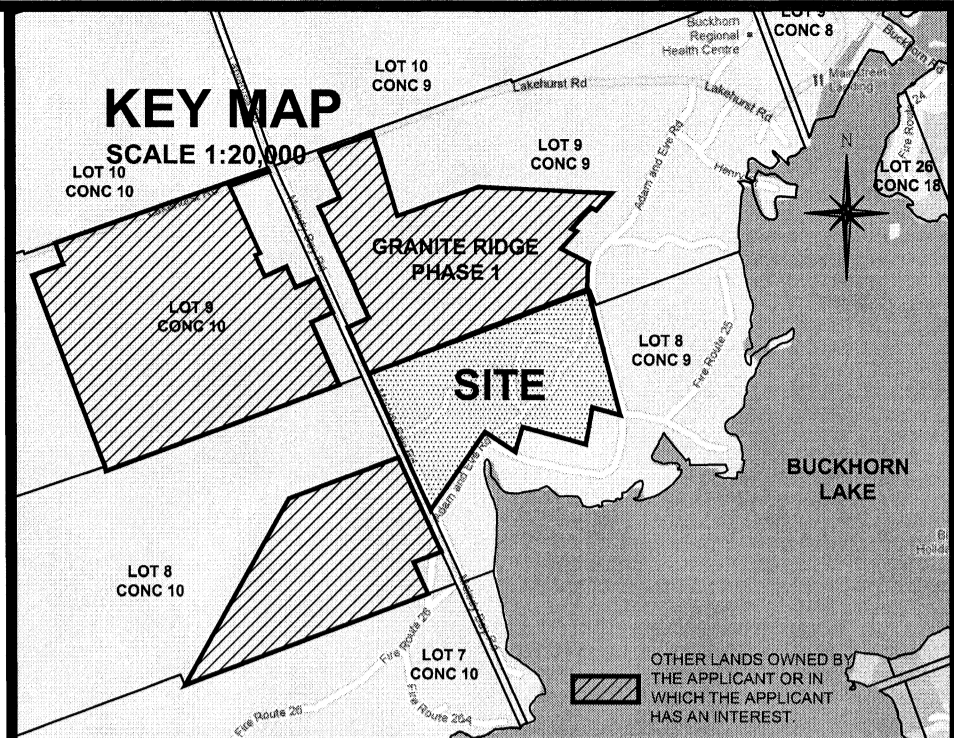


30 0 30 60 90 metres
SCALE 1:1500



CLASS ENVIRONMENTAL ASSESSMENT NOTES

- THE PROPONENT IS RESPONSIBLE FOR:
 - CONSTRUCTION OF THE PROPOSED STREET "A", "B", AND "C".
- THESE NOTES, THE PLAN AND THE ACCOMPANYING STUDIES SATISFY THE MUNICIPAL CLASS ENVIRONMENTAL ASSESSMENT REQUIREMENTS FOR ROAD, SEWAGE AND WATER PROJECTS.



KEY MAP
N.T.S.

LEGEND

- COMMON ELEMENTS CONDOMINIUM
- - - PROPOSED PARCELS OF TIED LAND
- BOUNDARY DRAFT PLAN OF SUBDIVISION
- EXISTING LOTS
- EXISTING R.O.W.
- EXISTING ROAD
- - - 25.4 EXISTING MAJOR CONTOUR
- - - 254.0 EXISTING MINOR CONTOUR
- TREE LINE
- SWM POND
- CHANNELS
- OPEN SPACE

TOPOGRAPHIC MAPPING BY FIRST BASE SOLUTIONS BASED ON 2008 AERIAL PHOTOGRAPHY. LIMIT OF POND FROM TOPOGRAPHIC SURVEY BY J.B. FLEGUEL O.L.S., 2010.

SCHEDULE OF REVISIONS

NO.	DATE	DESCRIPTION	CHECKED



INFORMATION REQUIRED UNDER SECTION 51 (17) OF THE PLANNING ACT, R.S.O. 1990

- | | |
|------------------|--|
| A. SHOWN ON PLAN | H. PRIVATE WELL WATER SUPPLY |
| B. SHOWN ON PLAN | I. SAND AND GRAVEL OVER ROCK |
| C. SHOWN ON PLAN | J. SHOWN ON PLAN |
| D. SHOWN ON PLAN | K. ROADS, ELECTRICAL POWER, WASTE DISPOSAL AND PROTECTION SERVICES |
| E. SHOWN ON PLAN | L. SUBJECT TO EASEMENT FOR DRAINAGE OVER BLKS 34 & 35 |
| F. SHOWN ON PLAN | |
| G. SHOWN ON PLAN | |

LAND USE SUMMARY

COMMON ELEMENTS CONDOMINIUM		
BLOCK 34-35	STORM WATER MANAGEMENT	2.12 ha
BLOCK 43	OPEN SPACE	0.59 ha
TOTAL		2.71 ha

OWNER'S AUTHORIZATION

I AUTHORIZE SKELTON, BRUMWELL & ASSOCIATES INC. TO PREPARE AND SUBMIT THIS DRAFT PLAN OF COMMON ELEMENTS CONDOMINIUM FOR APPROVAL.

Jeff Chesler DATE 12/18/2019

NOTE: PARCELS OF TIED LAND LOTS ARE 1-33 ON DRAFT PLAN

GRANITE RIDGE SUBDIVISION PHASE 2
MUNICIPALITY OF TRENT LAKES

DRAFT PLAN OF COMMON ELEMENTS CONDOMINIUM

PROJECT NO. 09-2361	DRWG NO. 2361-DP CEC
DATE: JAN 2018	SCALE: 1:1500
DRAWN: BDD	CHECKED: JB APPROVED: JB

SBA Skelton Brumwell & Associates Inc.
ENGINEERING PLANNING ENVIRONMENTAL CONSULTANTS

93 BELL FARM ROAD, SUITE 107 BARRIE, ONTARIO L4M 5G1 www.skeltonbrumwell.ca
TELEPHONE (705) 726-1141 FAX (705) 726-0331 TOLL FREE (877) 726-1141

Copyright © 2017 Skelton Brumwell & Associates Inc. All rights reserved. No part of this drawing may be reproduced, stored in a retrieval system, or transmitted in any form or by any means, electronic, mechanical, photocopying, recording, or by any information storage and retrieval system, without the prior written permission of the copyright holder.