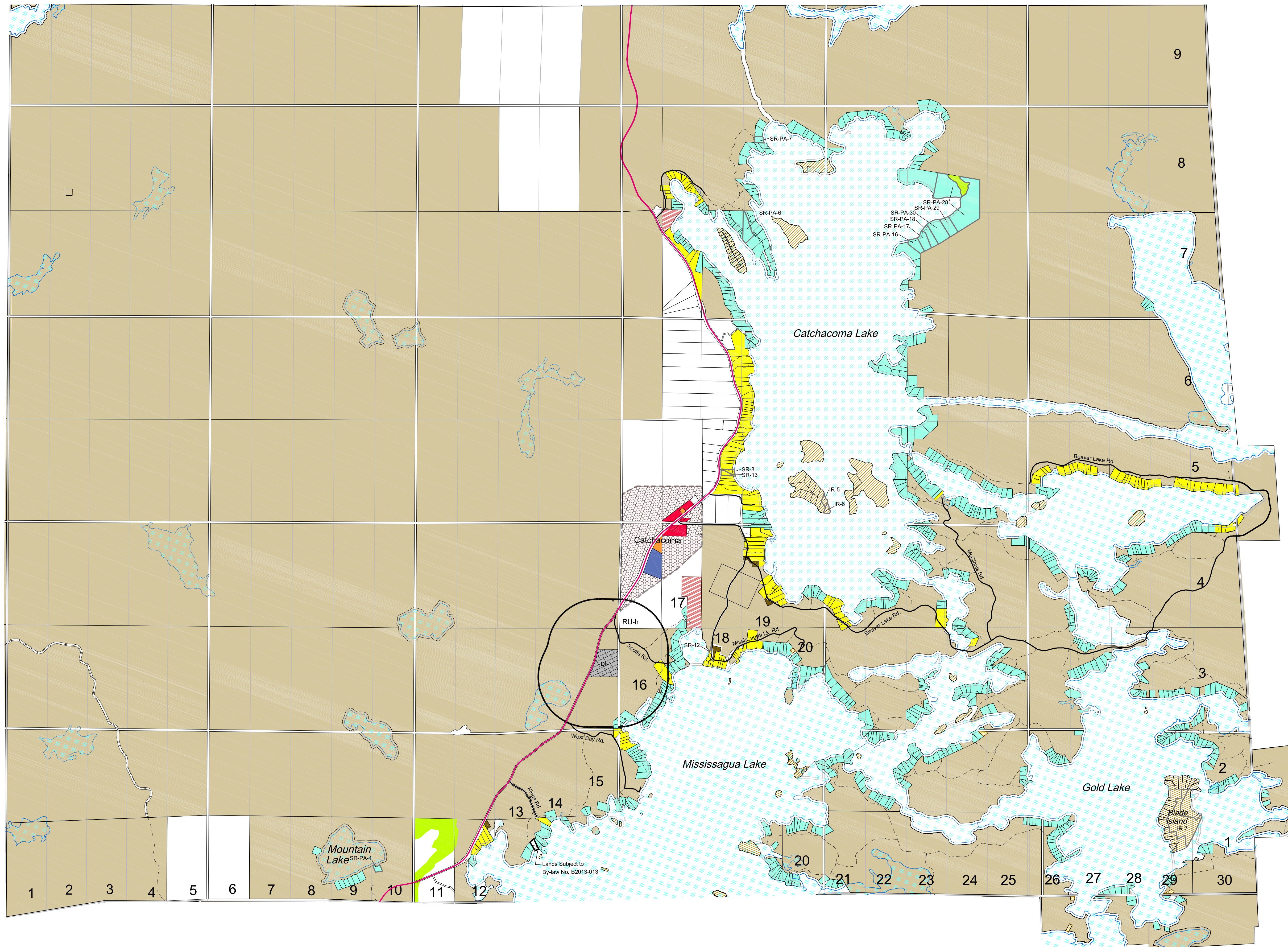
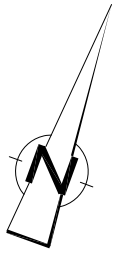


Municipality of Trent Lakes  
 Geographic Township of Cavendish  
 Schedule A to By-Law No. B2014-070  
 Map 4



**Legend**

Rural Residential	
Rural Residential - Private Access	
Shoreline Residential	
Shoreline Residential - Private Access	
Hamlet Residential	
Island Residential	
Community Facility	
Tourist Commercial	
Hamlet Commercial	
General Commercial	
General Industrial	
Extractive Industrial	
Disposal Industrial	
Environmental Protection	
Rural	
Crown Land	
Open Space	
Development	
Landfill Area of Influence	

**Base Features**

Provincial Highway	
County Road	
Municipally Maintained Roads	
Private Roads	
Hamlet Boundary	

