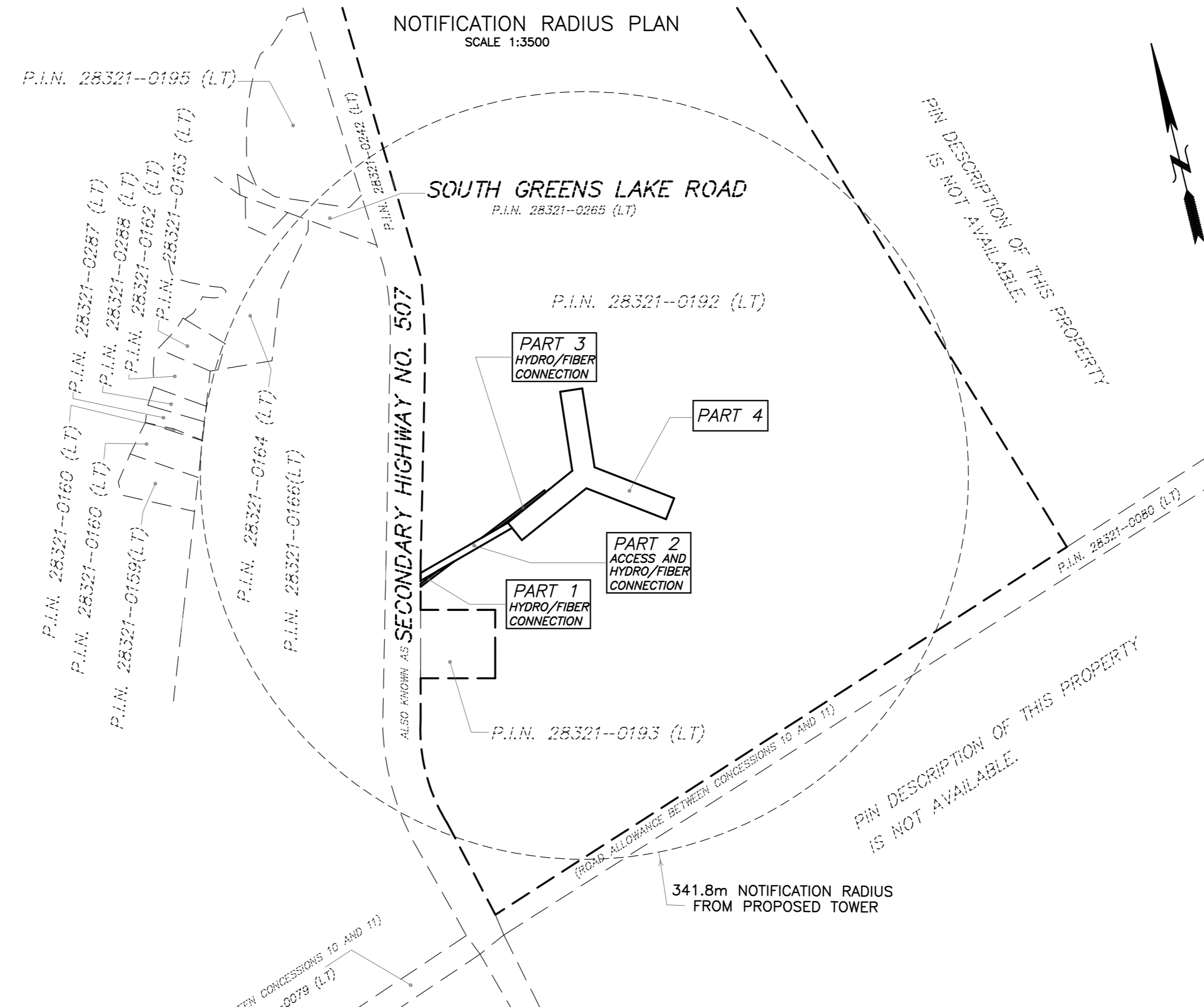
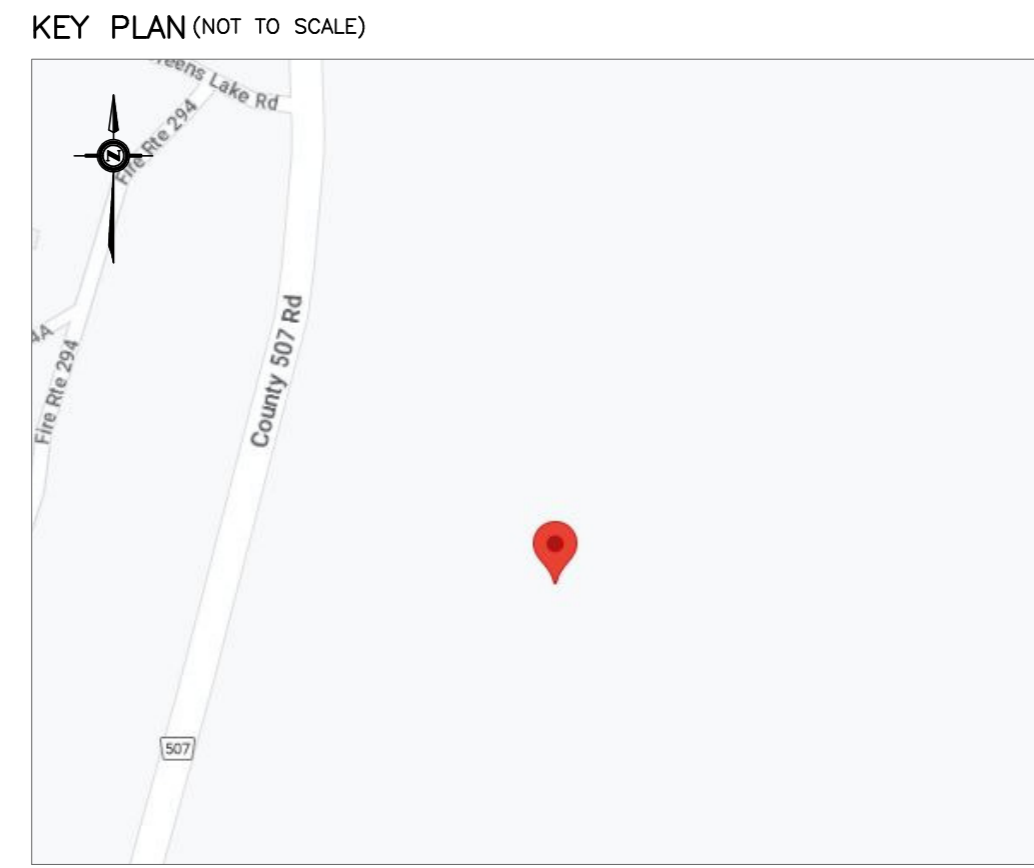
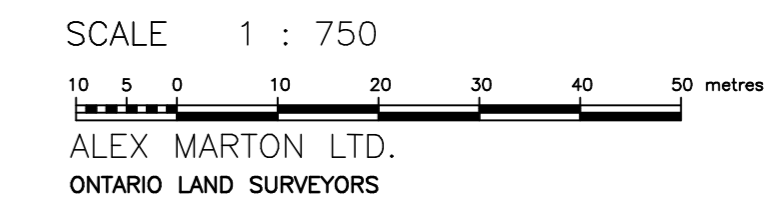


SITE DATA	EXISTING	PROPOSED
PROPERTY AREA	±34.5ha	
AREA LEASED		
HYDRO/FIBER CONNECTION (PART 1)		57 sq.m.
ACCESS AND HYDRO/FIBER CONNECTION (PART 2)		551 sq.m.
HYDRO/FIBER CONNECTION (PART 3)		124 sq.m.
(PART 4)		4593 sq.m.
TOTAL		5325 sq.m.
UNITS		1 PROPOSED RADIO EQUIPMENT SHELTER 1 PROPOSED STEEL GUYED TOWER
HEIGHT OF TOWER		90 m
SETBACKS		
PROPOSED STEEL GUYED TOWER		
FRONT (SECONDARY HIGHWAY NO. 507)		±146 m
SIDE (SOUTH)		±282 m
PROPOSED RADIO EQUIPMENT SHELTER		
FRONT (SECONDARY HIGHWAY NO. 507)		±149 m
SIDE (SOUTH)		±277 m



SITE PLAN
 PROPOSED
 TELECOMMUNICATION INSTALLATION
PART OF LOTS 16 AND 17
CONCESSION 11
 TOWNSHIP OF GALWAY-CAVENDISH AND HARVEY
 (FORMERLY IN GEOGRAPHIC TOWNSHIP OF CAVENDISH)
 COUNTY OF PETERBOROUGH



METRIC
 DISTANCES AND COORDINATES SHOWN ON THIS PLAN ARE IN METRES AND CAN BE CONVERTED TO FEET BY DIVIDING BY 0.3048.

SCHEDULE

PART	LOT	CONCESSION	P.I.N.	AREA sq.m
1	PART OF 16	11	28321-0192 (LT)	57
2	PART OF 16 AND 17			551
3	PART OF 16 AND 17			124
4	PART OF 17			4593

INTEGRATION NOTE
 BEARINGS SHOWN ARE GRID BEARINGS AND ARE DERIVED FROM OBSERVED REFERENCE POINTS (ORP'S) 1 AND 2 BY REAL TIME NETWORK OBSERVATIONS, UTM ZONE 17, NAD 83 (CSRS) (2010.0 EPOCH).
 DISTANCES SHOWN ON THIS PLAN ARE GROUND DISTANCES AND CAN BE CONVERTED TO GRID DISTANCES BY MULTIPLYING BY THE COMBINED SCALE FACTOR OF 1.00010217.

INTEGRATION DATA

POINT ID	NORTHING	EASTING
ORP 1	4962549.75	708619.34
ORP 2	4962509.21	708609.46

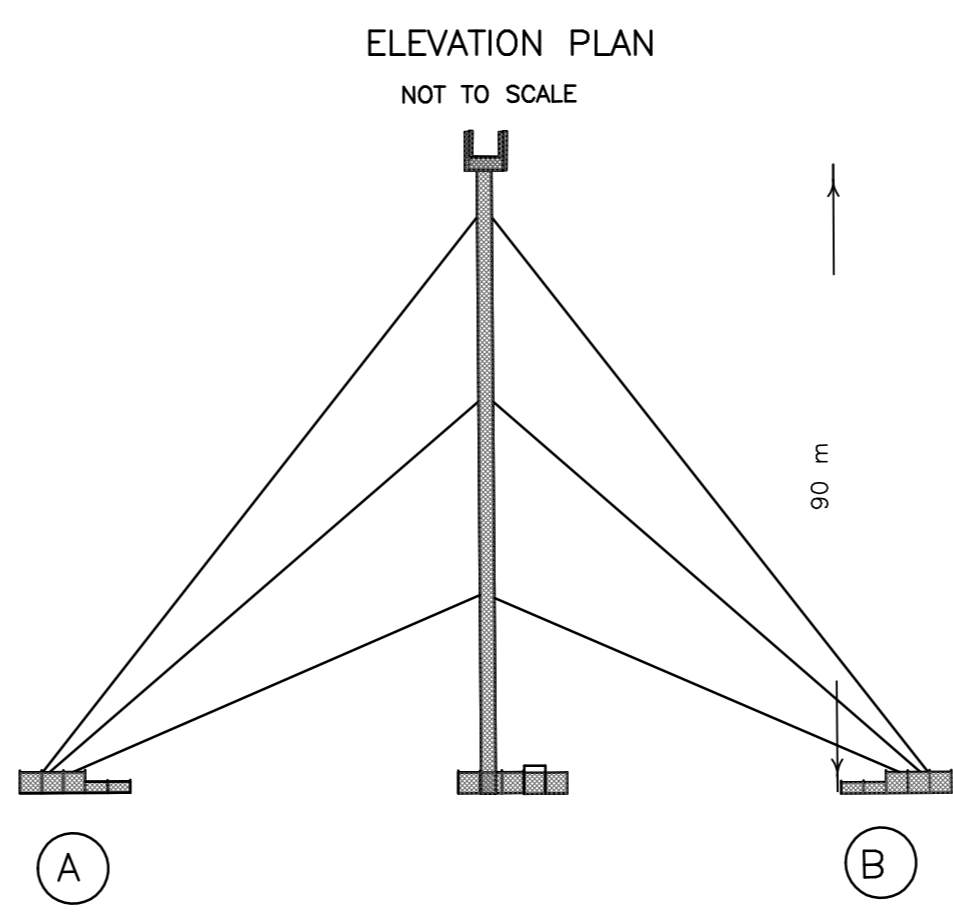
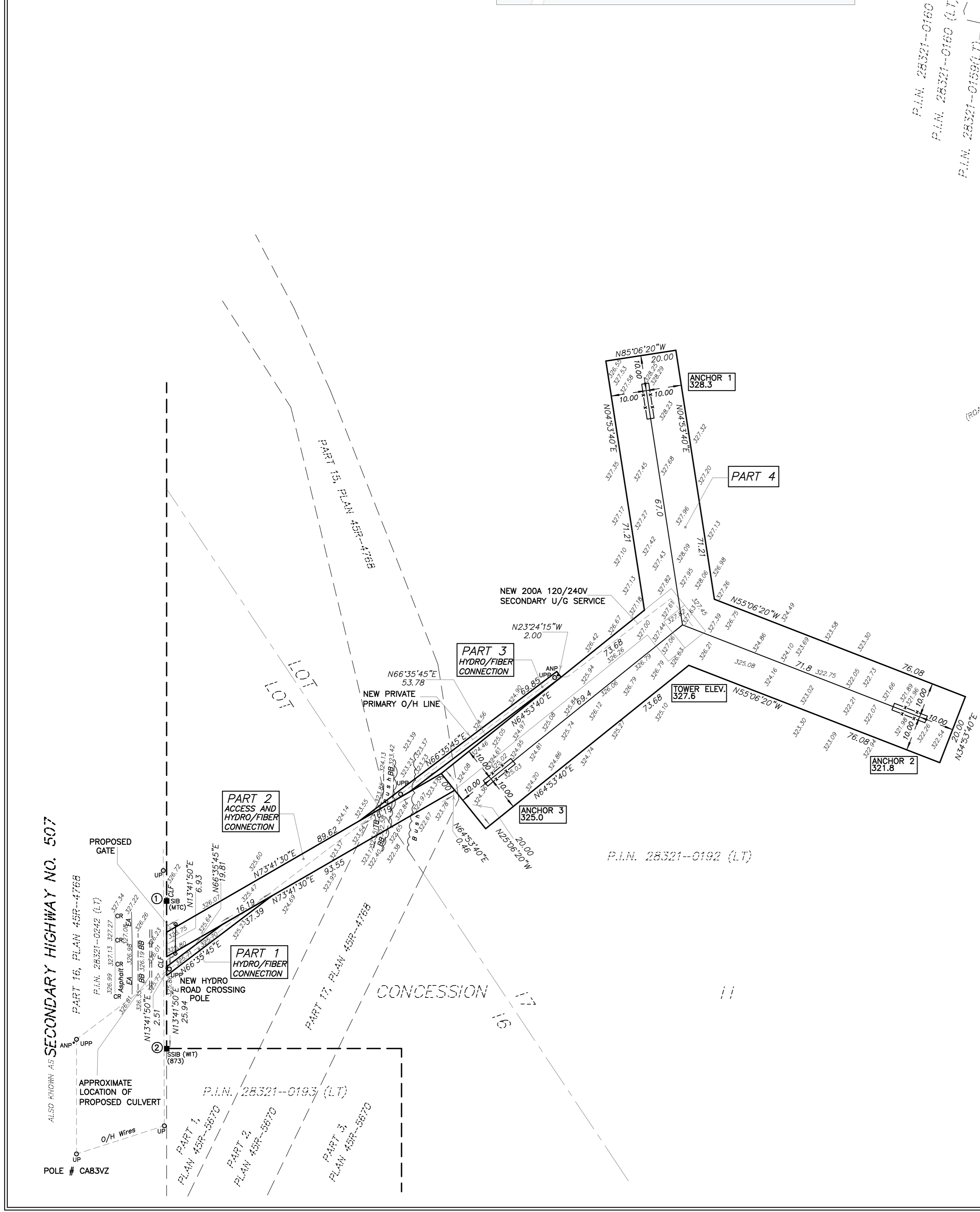
COORDINATES CANNOT, IN THEMSELVES, BE USED TO RE-ESTABLISH CORNERS OR BOUNDARIES SHOWN ON THIS PLAN.

ELEVATION NOTE
 ELEVATIONS SHOWN HEREON ARE GEODETIC AND ARE DERIVED FROM GPS OBSERVATIONS USING REAL TIME NETWORK OBSERVATIONS.

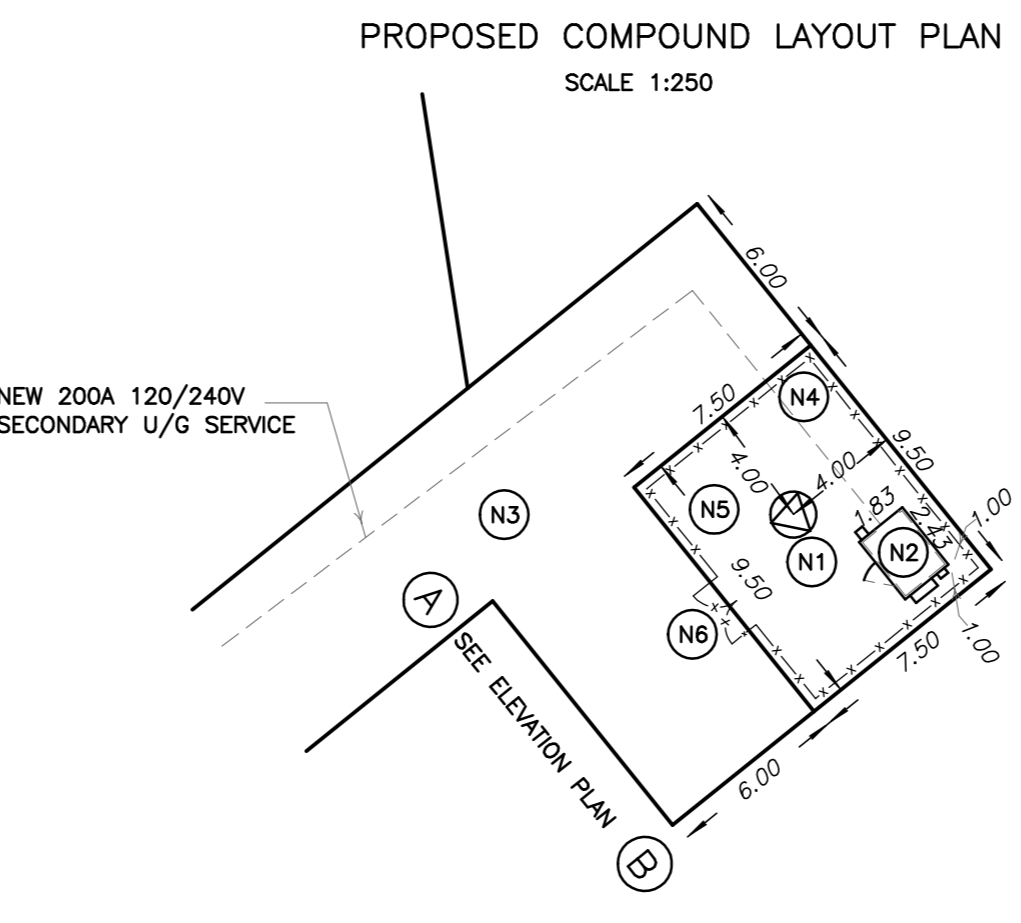
SURVEYOR'S CERTIFICATE
 I CERTIFY THAT:
 1. THE SURVEY WAS COMPLETED ON THE 21ST DAY OF MARCH, 2023.

MARCH 23, 2023
 DATE

A. MARTON
 ONTARIO LAND SURVEYOR



- NOTES**
- (N1) PROPOSED STEEL GUYED TOWER. PAINT COLOUR SUBJECT TO NAV CANADA REQUIREMENTS. ANTENNA NUMBER AND LOCATIONS TO BE DETERMINED. FOUNDATION DESIGN PENDING SOIL REPORT.
 - (N2) PROPOSED RADIO EQUIPMENT SHELTER ON REINFORCED CONCRETE SLAB.
 - (N3) PROPOSED GRAVEL ACCESS WAY AND HYDRO/FIBER CONNECTION.
 - (N4) PROPOSED 2.4 m HIGH CHAIN LINK SECURITY FENCE TOPPED WITH BARBED WIRE SURROUNDING THE COMPOUND.
 - (N5) REMOVE EXISTING TOPSOIL, PROOF ROLL SUBGRADE AND PLACE 300 mm GRANULAR ACROSS COMPOUND AREA. MATCH INTO EXISTING GRADES ADJACENT TO THE COMPOUND. PROVIDE POSITIVE DRAINAGE AWAY FROM THE TOWER, SHELTERS AND HYDRO PAD TOWARDS THE NATURAL SLOPE OF THE SITE. REINSTATE ALL DISTURBED AREAS.
 - (N6) PROPOSED CHAIN LINK GATE.



LEGEND

SYMBOL	DENOTES	SURVEY MONUMENT FOUND
SIB	STANDARD IRON BAR	
SSIB	SHORT STANDARD IRON BAR	
PIN	PROPERTY IDENTIFIER NUMBER	
MTC	MINISTRY OF TRANSPORTATION AND COMMUNICATION	
873	W.A. BENINGER LIMITED, O.L.S.	
UP	UTILITY POLE	
CR	CENTERLINE	
O/H	OVERHEAD	
BB	BOTTOM OF BANK	
TP	TOP OF BANK	
CLF	CHAIN LINK FENCE	
EA	EDGE OF ASPHALT	
UPP	PROPOSED UTILITY POLE	
ANP	PROPOSED ANCHOR	
U/G	UNDERGROUND	

AMENDMENTS		
No.	DESCRIPTION	DATE
1.	HYDRO/FIBER CONNECTION REVISED.	3.4.2023
2.	COMPOUND LAYOUT REVISED	13.04.2023

LATITUDE N44°47'10.4"
 44.786222
 LONGITUDE W78°21'39.0"
 -78.360833
 ELEVATION 327.6

Rogers™
 SITE NAME: KAWARTHA HIGHLANDS
 PROVINCIAL PARK
 SITE CODE: C8594

ALEX MARTON LIMITED
 ONTARIO LAND SURVEYORS
 160 APPLEWOOD CRESCENT, UNIT 8,
 CONCORD, ONTARIO, L4K 4B2
 PHONE: 905-879-9889 FAX: 905-879-0770
 E-MAIL: alex@amsurveying.ca
 WEBSITE: www.amsurveying.ca

PARTY CHIEF : F.V.W. FILE NAME: 2023-052(C8594).DWG
 DRAWN : J.H./Z.Y. PLOT SCALE: 1 : 750
 CHECKED : A.M. PROJECT No. 2023-052