

Recycling Guide



A guide to sorting:

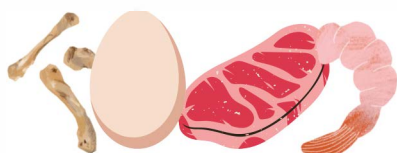
Organics Recycling

No bag needed. If a bag is used, it must be a paper bag.

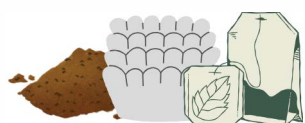
Available at the Buckhorn Transfer Station only. Please also consider backyard composting.



Fruits & Vegetables; whole or peels, dairy products, nuts, bread, oatmeal, rice, potatoes, baked goods



Meat, fish, shellfish, seafood, eggs, egg shells



Coffee grounds, filters, tea bags

No Plastic Bags or Compostable Bags

Garbage

Put garbage in clear garbage bags



Diapers, wipes, sanitary products, plasters and bandages



Plastic Cutlery



Chip bags, candy wrappers



Toothpaste tubes, dental floss, toothbrushes



Styrofoam packaging & meat pads/trays



Coffee Pods



Food & beverage pouches

Blue Box Recycling

Put into a clear bag or recycling bin

Fibres:



Clean cardboard (flattened), magazines, flyers, newspapers, books, paper egg cartons, cereal boxes (no liners), film plastic (bagged)

Containers:



Clean & empty metal tins, cans & glass



Milk cartons, juice boxes, coffee cups, frozen juice cans

Plastic bottles & tubs



Please Sort Into Containers and Fibres



Clear Garbage Bags are Mandatory

Visit www.trentlakes.ca/waste for more information
Use our Recycling App to help you sort your recycling!

Waste Diversion Programs



Electronics

No items containing Freon

All electronic and electrical items are accepted.

- Telecom Devices
- Audio Visual
- Power and Air Tools
- Games and Toys
- Small Appliances

Scrap Metal and Appliances

Item must contain at least 50% scrap metal.

- Refrigerator
- Freezers
- Air conditioner units
- Water coolers

Freon units are subject to a waste disposal fee. Doors must be removed on refrigerators and freezers prior to disposal.

Household Hazardous Waste (HHW) 20 litres or less

HHW is accepted seasonally at the Buckhorn Transfer Station only.

From June to Labour Day, HHW is accepted on the following days and times:

- Sunday - 11:00 a.m. to 4:00 p.m.
- Wednesday - 8:00 a.m. to 4:30 p.m.

Accepted Items:

- Paint
- Motor Oil
- Automotive Fluids
- Aerosols
- Propane Cylinders
- Gasoline

Alcohol Containers

Please place all alcohol containers in the donation bin on site.

- Beer
- Wine
- Spirits
- Coolers

Leaves and Yard Waste

- Brush (max. 6 inches in diameter)
- Leaves
- Grass clippings
- Shrubs

Household Hazardous Waste is accepted year-round at the Peterborough County/City Household Hazardous Waste Depot located at 400 Pido Road, Peterborough.



Batteries

Household Batteries

- Single use batteries
- Dry-cell rechargeable batteries

Car Batteries

- Accepted year-round at Bobcaygeon, Cavendish, and Crystal Lake Transfer Station
- Accepted during seasonal HHW hours at the Buckhorn Transfer Station

Empty Automotive Containers 30 litres or less

Empty plastic automotive and antifreeze containers are accepted.

Tires

Maximum 4 tires per load

Textile Recycling

Items must be gently used.

Stained and ripped items are allowed.

- Clothing
- Footwear
- Linens
- Kitchenware
- Toys
- Decor items
- Books

Light Bulbs

All bulbs accepted year-round at Bobcaygeon, Cavendish, and Crystal Lake Transfer Stations

Accepted during seasonal HHW hours at the Buckhorn Transfer Station

Textile Recycling

All types, accepted year-round.

Mattresses

Accepted only during scheduled events. Fees apply.

Accepted year-round at the Peterborough County/City Landfill, 1260 Bensfort Road or Waste Connections, 348 County Road 6.